

Table of Contents

- 1 Portfolio Summary and Market Outlook**
- 2 Performance Analysis**
- 3 Portfolio Structure**
- 4 Performance Attribution**
- 5 Portfolio Appraisal**
- 6 Purchases and Sales**
- 7 Income and Expenses**
- 8 Realized Gain & Loss**
- 9 Invoice**



Lead Portfolio Manager

Gregory R. Lai, CFA
Principal
949-251-2358
greg.lai@affinityinvestment.com

Primary Contact

Jordan M. Floriani, CFA
Portfolio Manager
949-251-2356
jordan.floriani@affinityinvestment.com

Portfolio Administrator

Joshua Katz, CFA
949-251-2354
josh.katz@aiallc.com

Affinity Investment Advisors, LLC
18111 Von Karman Avenue
Suite 550
Irvine CA 92612

For Existing Client use only: The publication may contain confidential and proprietary information of Affinity Investment Advisors, LLC (Affinity). Disclosure or dissemination of all or any part of this material to any unauthorized persons is prohibited without prior written consent of Affinity. The opinions expressed herein are based on current market conditions and are subject to change without notice. This is not an offer to buy or sell any financial instruments.

Portfolio Summary

Market Outlook

In the second quarter of 2016, the rise of the market as represented by the S&P 500 Index, generated a return of 2.5%. While the market's rise in the second quarter was not robust, it did reflect underlying optimism on the part of US investors. The preliminary data pertaining to real GDP growth in the recent quarter suggest the growth rate was about 2.5%. The 2.5% represents an increase from the less than 1% real growth in the first quarter of the year. The outlook for corporate profits for all of 2016 includes a small positive increase for the year as a whole. These data are consistent with the market's long held expectations for economic growth and corporate profits. The challenge to investor confidence came from shocks generated overseas for the most part.

Late in the quarter, the British voted to leave the EU. This vote generated alarming statements by commentators who could not know what they claimed to know; the impact of the British withdrawal from the EU. Initially, the US stock market fell sharply as the alarmist held sway. Eventually, the market regained lost ground as more reasonable points of view held sway. The process of withdrawing from the EU is likely to take place over time; if at all. As the process unfolds, investors will be able to make informed judgements with respect to the consequences.

The Chinese economy has become part of a continuing melodrama. The opaque nature of Chinese economic policy contributes to the drama. As is the case with centrally planned economies, there is little margin for error and the probability of putting in place destabilizing economic policies is high. The confused outlook for growth in China has produced fluctuations in commodity prices, and exchange rates, as well as a hazy outlook for the profits of US companies with substantial exposure to the Chinese market.

In the US, markets are roiled from time to time, by events in the political arena. Every four years the buffeting is ramped up as the Presidential election unfolds. In this case, as in the case with the British vote to leave the EU, many are holding forth claiming to know what they cannot know; who will win and what policies will unfold. A prudent stance for investors is to watch and listen. We will all be much smarter in a few months.

For the remainder of 2016, economic growth should fall in a range of 2% to 3%, and profits should climb modestly. The Fed has stated it will postpone an increase in short-term rates in light of the turmoil overseas and its potential negative impact on US markets and the US economy. In this environment, stocks should drift upward.

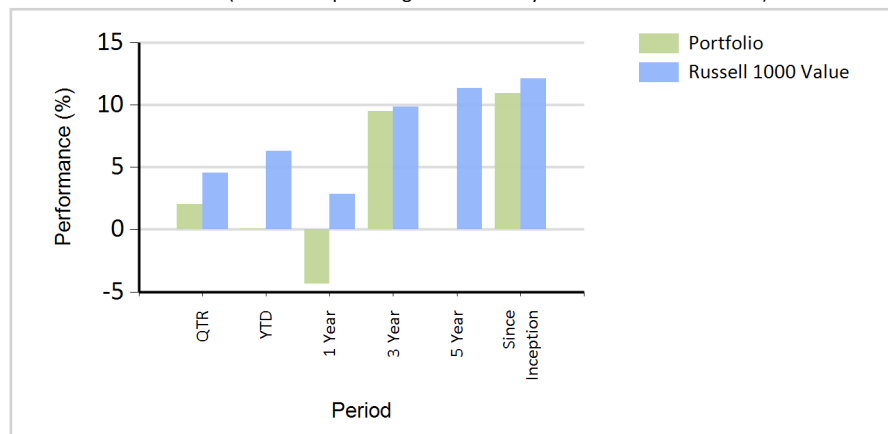
Market Value Summary

	QTR (\$)	YTD (\$)
Beginning Value	34,244,391.16	34,986,672.90
Contributions	-	-
Withdrawals	-47,271.06	-97,696.48
Realized Gain Loss	136,644.72	-645,506.97
Unrealized Gain Loss	342,171.79	214,898.03
Interest	131.64	202.15
Dividends	221,574.43	439,073.05
Ending Market Value	34,897,642.68	34,897,642.68

Performance Table (returns for periods greater than 1 year have been annualized)

Period	Portfolio (%)	Russell 1000 Value(%)	Excess Return (%)
QTR	2.05	4.57	-2.52
YTD	0.04	6.28	-6.24
1 Year	-4.35	2.84	-7.19
3 Year	9.49	9.86	-0.37
5 Year	-	11.34	-
Since Inception	10.95	12.11	-1.16

Performance Chart (returns for periods greater than 1 year have been annualized)



Russell 1000 Value: All data as of 6/30/2016; Inception Date: 3/31/2012; Source: Affinity. Returns for less than one year are not annualized. Gross of fees returns are before deduction of management fees but after trading commissions. Net returns will be lower. Past performance is not a guarantee of future results.

Performance Analysis

- Performance
- Contributing Factors

Performance Drivers and Detractors

- Affinity's performance objective is to seek to achieve consistently superior returns relative to the client-selected benchmark with a similar risk profile.
- Factors that should impact performance are attractive valuation, improving expectations on company fundamentals, favorable price momentum.

Largest Holdings

Security Name	Avg. Weight (%)	Return (%)
EXXON MOBIL CORP	4.99	13.09
WELLS FARGO & CO	3.95	-1.37
JPMORGAN CHASE & CO	3.93	5.71
CHEVRON CORP	3.22	11.05
AT+T INC COM	2.51	11.68
INTEL CORP	2.43	2.27
CISCO SYS INC COM	2.38	1.70
TRAVELERS COS INC	2.26	2.59
ALTRIA GROUP INC	2.17	11.01
PRUDENTIAL FINANCIAL INC	2.02	-0.33

Worst Performers

Security Name	Avg. Weight (%)	Return (%)
DELTA AIRLINES DEL	1.15	-24.93
MANPOWERGROUP INC	1.27	-20.12
VALERO ENERGY CORP COM	1.38	-19.61
TARGET CORP COM	1.92	-14.51
ALLERGAN INC	1.50	-13.78
APPLE INC	0.97	-11.75
HANESBRANDS	1.58	-10.96
GENERAL MOTORS	1.57	-8.80
GILEAD SCIENCES INC	1.43	-8.68
CB RICHARD ELLIS GROUP INC	1.36	-8.12

Bottom Contributors

Security Name	Avg. Weight (%)	Contribution (%)
DELTA AIRLINES DEL	1.15	-0.33
TARGET CORP COM	1.92	-0.31
VALERO ENERGY CORP COM	1.38	-0.30
MANPOWERGROUP INC	1.27	-0.27
ALLERGAN INC	1.50	-0.25
MICROSOFT CORP	1.68	-0.24
HANESBRANDS	1.58	-0.18
GENERAL MOTORS	1.57	-0.14
PHILLIPS 66	1.68	-0.14
GILEAD SCIENCES INC	1.43	-0.13

Best Performers

Security Name	Avg. Weight (%)	Return (%)
TALEN ENERGY CORPORATION	0.07	50.56
HALLIBURTON CO	1.90	27.33
BOSTON SCIENTIFIC CORP	1.84	24.24
SUNTRUST BANKS INC	1.91	14.49
JOHNSON CONTROLS INC	1.98	14.31
EXXON MOBIL CORP	4.99	13.09
LOCKHEED MARTIN CORP	1.88	12.81
INTERCONTINENTAL EXCHANGE	1.04	11.84
AT+T INC COM	2.51	11.68
CHEVRON CORP	3.22	11.05

Top Contributors

Security Name	Avg. Weight (%)	Contribution (%)
EXXON MOBIL CORP	4.99	0.63
HALLIBURTON CO	1.90	0.45
BOSTON SCIENTIFIC CORP	1.84	0.41
CHEVRON CORP	3.22	0.34
AT+T INC COM	2.51	0.29
JOHNSON CONTROLS INC	1.98	0.27
SUNTRUST BANKS INC	1.91	0.25
ALTRIA GROUP INC	2.17	0.23
LOCKHEED MARTIN CORP	1.88	0.23
JPMORGAN CHASE & CO	3.93	0.22

Portfolio Structure

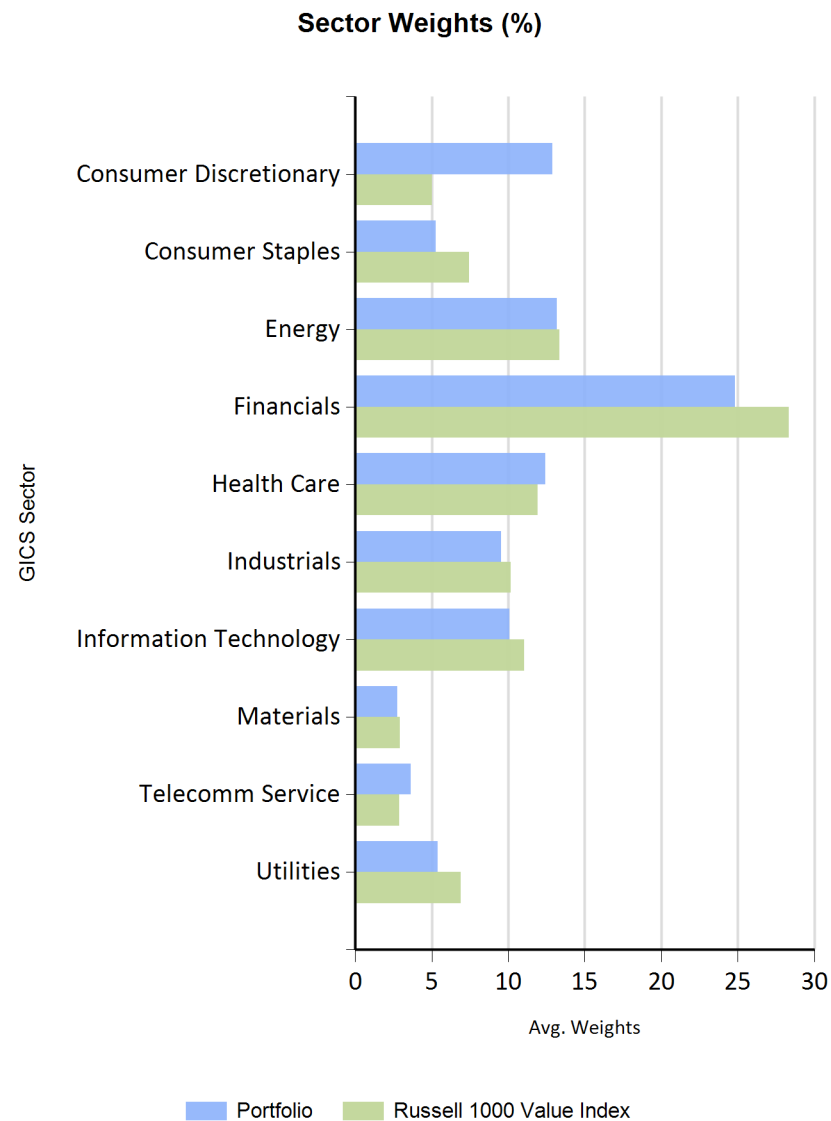
Current Portfolio Structure

Portfolios are built to maximize return and manage risk relative to the benchmark. Portfolios are monitored continuously and adjusted as necessary. Low Turnover and controlled exposure to multiple risk factors is paramount. Additionally, sector exposure is tied to the benchmark as well as other characteristics including dividend yield, price-to-book, and growth rates.

Portfolio Characteristics vs. Russell 1000 Value Index

Characteristics	Portfolio	Russell 1000 Value Index
Expected Return (%)	9.56	9.03
Weighted Average Market Cap (\$Mil)	105,122.95	109,462.98
Trailing P/E Ratio (x)	19.83	25.03
Forecast P/E Ratio (x)	13.55	16.40
Price / Book	2.18	1.89
EPS Growth - Next 5 Years (%)	9.21	7.59
R-Squared*	0.94	0.96
Dividend Yield (%)	2.56	2.61
Top 15(%) Holdings	42.38	31.67
Number of Holdings	54	690

*R-Squared statistic shown for both the Portfolio and Benchmark is calculated relative to the U.S. large cap equity market using the S&P 500 as proxy



Performance Attribution

Equity Performance Attribution - by GICS Sector

Ohio Board Workers Compensation vs. Russell 1000 Value Index

Mar 31, 2016 to Jun 30, 2016

Sector Name	Ohio Board Workers Compensation		Russell 1000 Value Index		Attribution Analysis					
	Avg. Weight	Total Return	Avg. Weight	Total Return	Selection Effect	Allocation Effect	Active Contrib.	Passive Contrib.	Sector Contrib.	Contrib. To Return
Consumer Discretionary	12.90	-3.49	5.03	-5.52	0.26	-0.82	-0.56	-0.52	-1.35	-1.08
Consumer Staples	5.25	5.36	7.44	6.32	-0.06	-0.04	-0.10	0.12	0.08	0.02
Energy	13.16	7.61	13.35	10.83	-0.43	0.00	-0.43	0.81	0.81	0.38
Financials	24.82	3.43	28.34	2.23	0.36	0.06	0.43	-0.62	-0.56	-0.20
Health Care	12.43	2.95	11.93	9.30	-0.74	0.02	-0.72	0.52	0.55	-0.20
Industrials	9.52	-2.75	10.16	2.30	-0.48	0.01	-0.47	-0.23	-0.22	-0.70
Information Technology	10.10	-2.66	11.05	1.23	-0.41	0.01	-0.40	-0.38	-0.37	-0.78
Materials	2.77	-0.58	2.91	6.34	-0.19	0.00	-0.19	0.05	0.05	-0.14
Telecomm Service	3.64	9.32	2.88	8.42	0.03	0.03	0.06	0.11	0.13	0.16
Utilities	5.41	5.28	6.90	7.05	-0.10	-0.03	-0.12	0.14	0.11	0.02
Total		2.07		4.59	-1.76	-0.76	-2.52	0.00	-0.76	-2.52

Performance Attribution

Equity Performance Attribution - by GICS Sector (Sorted by Contribution)

Ohio Board Workers Compensation vs. Russell 1000 Value Index

Mar 31, 2016 to Jun 30, 2016

Sector Name	Ohio Board Workers Compensation		Russell 1000 Value Index		Attribution Analysis					
	Avg. Weight	Total Return	Avg. Weight	Total Return	Selection Effect	Allocation Effect	Active Contrib.	Passive Contrib.	Sector Contrib.	Contrib. To Return
Energy	13.16	7.61	13.35	10.83	-0.43	0.00	-0.43	0.81	0.81	0.38
Health Care	12.43	2.95	11.93	9.30	-0.74	0.02	-0.72	0.52	0.55	-0.20
Telecomm Service	3.64	9.32	2.88	8.42	0.03	0.03	0.06	0.11	0.13	0.16
Utilities	5.41	5.28	6.90	7.05	-0.10	-0.03	-0.12	0.14	0.11	0.02
Consumer Staples	5.25	5.36	7.44	6.32	-0.06	-0.04	-0.10	0.12	0.08	0.02
Materials	2.77	-0.58	2.91	6.34	-0.19	0.00	-0.19	0.05	0.05	-0.14
Industrials	9.52	-2.75	10.16	2.30	-0.48	0.01	-0.47	-0.23	-0.22	-0.70
Information Technology	10.10	-2.66	11.05	1.23	-0.41	0.01	-0.40	-0.38	-0.37	-0.78
Financials	24.82	3.43	28.34	2.23	0.36	0.06	0.43	-0.62	-0.56	-0.20
Consumer Discretionary	12.90	-3.49	5.03	-5.52	0.26	-0.82	-0.56	-0.52	-1.35	-1.08
Total		2.07		4.59	-1.76	-0.76	-2.52	0.00	-0.76	-2.52

Portfolio Appraisal

		Quantity	Ticker	Cusip	Security Name	Unit Cost (\$)	Total Cost (\$)	Price(\$)	Market Value (\$)	Unrealized Gain/Loss(\$)	% of Assets
Equity Investments	Business Equip. & Serv.	5,620	MAN	56418H100	MANPOWERGROUP INC	74.48	418,602.33	64.34	361,590.80	-57,011.53	1.04
		Total Business Equip. & Serv.					418,602.33		361,590.80	-57,011.53	1.04
	Capital Goods	4,880	BA	097023105	BOEING CO	128.60	627,560.42	129.87	633,765.60	6,205.18	1.82
		4,920	HON	438516106	HONEYWELL INTL	97.07	477,607.03	116.32	572,294.40	94,687.37	1.64
		16,210	JCI	478366107	JOHNSON CONTROLS INC	44.07	714,312.44	44.26	717,454.60	3,142.16	2.06
		2,750	LMT	539830109	LOCKHEED MARTIN CORP	199.16	547,686.97	248.17	682,467.50	134,780.53	1.96
		18,800	MAS	574599106	MASCO CORP	29.03	545,848.60	30.94	581,672.00	35,823.40	1.67
		Total Capital Goods					2,913,015.46		3,187,654.10	274,638.64	9.15
	Consumer Durables	17,790	GM	37045V100	GENERAL MOTORS	29.30	521,229.21	28.30	503,457.00	-17,772.21	1.44
		Total Consumer Durables					521,229.21		503,457.00	-17,772.21	1.44
	Consumer Non-Durables	11,660	MO	02209S103	ALTRIA GROUP INC	37.72	439,770.63	68.96	804,073.60	364,302.97	2.30
		10,530	CPB	134429109	CAMPBELL SOUP CO	63.12	664,696.77	66.53	700,560.90	35,864.13	2.01
		19,910	HBI	410345102	HANESBRANDS	33.02	657,366.48	25.13	500,338.30	-157,028.18	1.43
		Total Consumer Non-Durables					1,761,833.88		2,004,972.80	243,138.92	5.74
	Consumer Services	4,940	DIS	254687106	WALT DISNEY CO	90.90	449,054.75	97.82	483,230.80	34,176.05	1.38
		4,340	WYN	98310W108	WYNDHAM WORLDWIDE CORP	54.12	234,898.14	71.23	309,138.20	74,240.06	0.89
		Total Consumer Services					683,952.89		792,369.00	108,416.11	2.27
	Energy	11,010	CVX	166764100	CHEVRON CORP	106.94	1,177,382.66	104.83	1,154,178.30	-23,204.36	3.31
		19,430	XOM	30231G102	EXXON MOBIL CORP	82.73	1,607,403.10	93.74	1,821,368.20	213,965.10	5.22
		15,920	HAL	406216101	HALLIBURTON CO	36.62	582,979.80	45.29	721,016.80	138,037.00	2.07
		7,050	PSX	718546104	PHILLIPS 66	70.69	498,369.44	79.34	559,347.00	60,977.56	1.60
		9,790	VLO	91913Y100	VALERO ENERGY CORP COM	42.10	412,165.26	51.00	499,290.00	87,124.74	1.43
		Total Energy					4,278,300.26		4,755,200.30	476,900.04	13.63
	Financial Services	10,090	AFL	001055102	AFLAC INC	68.73	693,509.92	72.16	728,094.40	34,584.48	2.09
		11,450	AXP	025816109	AMERICAN EXPRESS	63.92	731,937.82	60.76	695,702.00	-36,235.82	1.99
		12,110	DFS	254709108	DISCOVER FINANCIAL SVCS	55.01	666,116.61	53.59	648,974.90	-17,141.71	1.86
		21,630	JPM	46625H100	JPMORGAN CHASE & CO	53.02	1,146,826.41	62.14	1,344,088.20	197,261.79	3.85
		45,990	KEY	493267108	KEYCORP	13.70	629,983.35	11.05	508,189.50	-121,793.85	1.46
		13,690	LNC	534187109	LINCOLN NATIONAL CORP	34.23	468,673.40	38.77	530,761.30	62,087.90	1.52

Affinity Investment Advisors, LLC - Value Equity
Ohio Board Workers Compensation

Mar 31, 2016 to Jun 30, 2016

		Quantity	Ticker	Cusip	Security Name	Unit Cost (\$)	Total Cost (\$)	Price(\$)	Market Value (\$)	Unrealized Gain/Loss(\$)	% of Assets
Equity Investments	Financial Services	9,190	PRU	744320102	PRUDENTIAL FINANCIAL INC	80.95	743,901.89	71.34	655,614.60	-88,287.29	1.88
		16,060	STI	867914103	SUNTRUST BANKS INC	41.42	665,279.77	41.08	659,744.80	-5,534.97	1.89
		6,860	TRV	89417E109	TRAVELERS COS INC	89.11	611,321.08	119.04	816,614.40	205,293.32	2.34
		27,860	WFC	949746101	WELLS FARGO & CO	42.47	1,183,210.90	47.33	1,318,613.80	135,402.90	3.78
		Total Financial Services						7,540,761.15		7,906,397.90	365,636.75
	Healthcare	5,790	AET	00817Y108	AETNA INC	68.86	398,683.51	122.13	707,132.70	308,449.19	2.03
		2,230	AGN	G0177J108	ALLERGAN INC	180.89	403,375.00	231.09	515,330.70	111,955.70	1.48
		3,610	AMGN	031162100	AMGEN INC	100.69	363,477.62	152.15	549,261.50	185,783.88	1.57
		26,090	BSX	101137107	BOSTON SCIENTIFIC CORP	18.71	488,188.25	23.37	609,723.30	121,535.05	1.75
		5,510	GILD	375558103	GILEAD SCIENCES INC	90.01	495,931.96	83.42	459,644.20	-36,287.76	1.32
		11,520	MYL	N59465109	MYLAN NV	55.56	640,091.98	43.24	498,124.80	-141,967.18	1.43
		33,560	PFE	717081103	PFIZER INC	33.84	1,135,781.15	35.21	1,181,647.60	45,866.45	3.39
		Total Healthcare						3,925,529.47		4,520,864.80	595,335.33
	Raw Materials	5,940	CE	150870103	CELANESE CORPORATION	62.85	373,342.66	65.45	388,773.00	15,430.34	1.11
		10,350	DOW	260543103	DOW CHEMICAL CO	49.04	507,517.43	49.71	514,498.50	6,981.07	1.47
		Total Raw Materials						880,860.09		903,271.50	22,411.41
	Retail	11,020	KR	501044101	KROGER CO	37.46	412,842.26	36.79	405,425.80	-7,416.46	1.16
		8,830	TGT	87612E106	TARGET CORP COM	81.79	722,245.44	69.82	616,510.60	-105,734.84	1.77
		Total Retail						1,135,087.70		1,021,936.40	-113,151.30
	Shelter Real Estate	16,000	CBG	12504L109	CB RICHARD ELLIS GROUP INC	37.71	603,374.25	26.48	423,680.00	-179,694.25	1.21
		14,180	LEN	526057104	LENNAR CORP	41.86	593,560.30	46.10	653,698.00	60,137.70	1.87
		29,910	PHM	745867101	PULTE CORP	17.68	528,766.20	19.49	582,945.90	54,179.70	1.67
		Total Shelter Real Estate						1,725,700.75		1,660,323.90	-65,376.85
	Technology	4,000	ADBE	00724F101	ADOBE SYSTEMS	96.92	387,680.00	95.79	383,160.00	-4,520.00	1.10
		3,351	AAPL	037833100	APPLE INC	75.19	251,948.23	95.60	320,355.60	68,407.37	0.92
3,710		AVGO	Y09827109	BROADCOM LIMITED	131.50	487,868.34	155.40	576,534.00	88,665.66	1.65	
29,200		CSCO	17275R102	CISCO SYS INC COM	27.80	811,768.18	28.69	837,748.00	25,979.82	2.40	
4,660		CTXS	177376100	CITRIX SYSTEMS INC	83.17	387,584.32	80.09	373,219.40	-14,364.92	1.07	
26,700		INTC	458140100	INTEL CORP	33.99	907,578.07	32.80	875,760.00	-31,818.07	2.51	
Total Technology						3,234,427.14		3,366,777.00	132,349.86	9.65	
Telecommunications	21,900	T	00206R102	AT+T INC COM	33.43	732,074.14	43.21	946,299.00	214,224.86	2.71	
	7,510	VZ	92343V104	VERIZON COMMUNICATIONS INC	42.88	322,046.07	55.84	419,358.40	97,312.33	1.20	

Affinity Investment Advisors, LLC - Value Equity

Ohio Board Workers Compensation

Mar 31, 2016 to Jun 30, 2016

		Quantity	Ticker	Cusip	Security Name	Unit Cost (\$)	Total Cost (\$)	Price(\$)	Market Value (\$)	Unrealized Gain/Loss(\$)	% of Assets
Equity Investments	Telecommunications	Total Telecommunications					1,054,120.21		1,365,657.40	311,537.19	3.91
	Transportation	9,220	DAL	247361702	DELTA AIRLINES DEL	18.28	168,570.40	36.43	335,884.60	167,314.20	0.96
		Total Transportation					168,570.40		335,884.60	167,314.20	0.96
	Utilities	9,600	AEP	025537101	AMERICAN ELECTRIC POWER INC.	44.42	426,440.60	70.09	672,864.00	246,423.40	1.93
		9,980	PCG	69331C108	PG&E CORP	50.99	508,856.01	63.92	637,921.60	129,065.59	1.83
		16,000	PPL	69351T106	PPL CORP	28.14	450,285.22	37.75	604,000.00	153,714.78	1.73
		1,998	TLN	87422J105	TALEN ENERGY CORPORATION	16.26	32,481.82	13.55	27,072.90	-5,408.92	0.08
		Total Utilities					1,418,063.65		1,941,858.50	523,794.85	5.57
							31,660,054.59		34,628,216.00	2,968,161.41	99.25
	Cash & Cash Equivalents										
	DIVIDEND ACCRUAL ACCOUNT					33,032.40		33,032.40		0.09	
	INTEREST ACCRUAL ACCOUNT					40.20		40.20		0.00	
	MONEY MARKET ACCOUNTS					236,354.08		236,354.08		0.68	
	Total					269,426.68		269,426.68		0.77	
						269,426.68		269,426.68		0.77	
Grand Total						31,929,481.27		34,897,642.68	2,968,161.41	100.00	

Affinity Investment Advisors, LLC - Value Equity

Ohio Board Workers Compensation

Mar 31, 2016 to Jun 30, 2016

Purchases and Sales

	Trade Date	Settlement Date	Quantity	Security Name	Symbol	Price (\$)	Commission (\$)	Total (\$)
Purchases	5/20/2016	5/25/2016	4,000	ADOBE SYSTEMS	ADBE	96.92	40.00	387,680.00
	5/20/2016	5/25/2016	10,090	AFLAC INC	AFL	68.73	100.90	693,509.92
	5/20/2016	5/25/2016	11,450	AMERICAN EXPRESS	AXP	63.92	114.50	731,937.82
	5/20/2016	5/25/2016	4,660	CITRIX SYSTEMS INC	CTXS	83.17	46.60	387,584.32
	5/20/2016	5/25/2016	12,110	DISCOVER FINANCIAL SVCS	DFS	55.01	121.10	666,116.61
	5/20/2016	5/25/2016	33,560	PFIZER INC	PFE	33.84	335.60	1,135,781.15
	5/20/2016	5/25/2016	2,430	VALERO ENERGY CORP COM	VLO	55.87	24.30	135,764.10
Total Purchases							783.00	4,138,373.92
Sales	5/20/2016	5/25/2016	64,650	BANK OF AMERICA CORP	BAC	14.46	646.50	935,128.92
	5/20/2016	5/25/2016	2,570	INTERCONTINENTAL EXCHANGE	ICE	263.30	25.70	676,684.50
	5/20/2016	5/25/2016	11,470	ABBVIE INC	ABBV	59.92	114.70	687,328.20
	5/20/2016	5/25/2016	21,640	MORGAN STANLEY	MS	26.69	216.40	577,567.66
	5/20/2016	5/25/2016	19,350	MICROSOFT CORP	MSFT	50.76	193.50	982,196.19
	5/20/2016	5/25/2016	6,030	BOSTON SCIENTIFIC CORP	BSX	22.33	60.30	134,624.65
Total Sales							1,257.10	3,993,530.12

Income and Expenses

	Security Name	Rate Per Share (\$)	Ex Date	Pay Date	Net Amount (\$)
Income	ABBVIE INC	2.28	4/13/2016	5/16/2016	6,537.90
	AETNA INC	1.00	4/12/2016	4/29/2016	1,447.50
	ALTRIA GROUP INC	2.26	6/13/2016	7/11/2016	6,587.90
	AMERICAN ELECTRIC POWER INC.	2.24	5/6/2016	6/10/2016	5,376.00
	AMERICAN EXPRESS	1.16	6/29/2016	8/10/2016	3,320.50
	AMGEN INC	4.00	5/13/2016	6/8/2016	3,610.00
	APPLE INC	2.28	5/5/2016	5/12/2016	1,910.07
	AT+T INC COM	1.92	4/6/2016	5/2/2016	10,512.00
	BOEING CO	4.36	5/11/2016	6/3/2016	5,319.20
	BROADCOM LIMITED	2.00	6/15/2016	6/30/2016	1,855.00
	CAMPBELL SOUP CO	1.25	4/7/2016	5/2/2016	3,285.36
	CELANESE CORPORATION	1.44	4/28/2016	5/12/2016	2,138.40
	CHEVRON CORP	4.28	5/17/2016	6/10/2016	11,780.70
	CISCO SYS INC COM	1.04	4/4/2016	4/27/2016	7,592.00
	DELTA AIRLINES DEL	0.54	5/9/2016	6/1/2016	1,244.70
	DOW CHEMICAL CO	1.84	6/28/2016	7/29/2016	4,761.00
	EXXON MOBIL CORP	3.00	5/11/2016	6/10/2016	14,572.50
	GENERAL MOTORS	1.52	6/8/2016	6/23/2016	6,760.20
	GILEAD SCIENCES INC	1.88	6/14/2016	6/29/2016	2,589.70
	HALLIBURTON CO	0.72	5/27/2016	6/22/2016	2,865.60
	HANESBRANDS	0.44	5/13/2016	6/7/2016	2,190.10
	HONEYWELL INTL	2.38	5/17/2016	6/10/2016	2,927.40
	INTEL CORP	1.04	5/4/2016	6/1/2016	6,942.00
	JOHNSON CONTROLS INC	1.16	6/8/2016	7/5/2016	4,700.90
	JPMORGAN CHASE & CO	1.76	4/4/2016	4/30/2016	9,517.20
	KEYCORP	0.34	5/26/2016	6/15/2016	3,909.15
	KROGER CO	0.48	5/11/2016	6/1/2016	1,157.10
	LENNAR CORP	0.16	4/25/2016	5/11/2016	567.20
	LINCOLN NATIONAL CORP	1.00	4/7/2016	5/2/2016	3,422.50
	LOCKHEED MARTIN CORP	6.60	5/27/2016	6/24/2016	4,537.50
	MANPOWERGROUP INC	1.72	5/27/2016	6/15/2016	4,833.20
	MASCO CORP	0.38	4/6/2016	5/9/2016	1,786.00
	MICROSOFT CORP	1.44	5/17/2016	6/9/2016	6,966.00

Affinity Investment Advisors, LLC - Value Equity

Ohio Board Workers Compensation

Mar 31, 2016 to Jun 30, 2016

	Security Name	Rate Per Share (\$)	Ex Date	Pay Date	Net Amount (\$)
Income	MONEY MARKET ACCOUNTS		4/1/2016	4/1/2016	-31.05
	MONEY MARKET ACCOUNTS		4/1/2016	4/1/2016	31.02
	MONEY MARKET ACCOUNTS		5/2/2016	5/2/2016	45.44
	MONEY MARKET ACCOUNTS		5/2/2016	5/2/2016	-45.47
	MONEY MARKET ACCOUNTS		5/31/2016	6/1/2016	46.01
	MONEY MARKET ACCOUNTS		6/1/2016	6/1/2016	46.03
	MONEY MARKET ACCOUNTS		6/1/2016	6/1/2016	-46.01
	MONEY MARKET ACCOUNTS		6/30/2016	7/1/2016	40.20
	MONEY MARKET ACCOUNTS		4/29/2016	5/2/2016	45.47
	MORGAN STANLEY	0.60	4/27/2016	5/13/2016	3,246.00
	PG&E CORP	1.96	6/28/2016	7/15/2016	4,890.20
	PHILLIPS 66	2.52	5/16/2016	6/1/2016	4,441.50
	PPL CORP	1.52	6/8/2016	7/1/2016	6,080.00
	PRUDENTIAL FINANCIAL INC	2.80	5/20/2016	6/16/2016	6,433.00
	PULTE CORP	0.36	6/7/2016	7/1/2016	2,691.90
	SUNTRUST BANKS INC	0.96	5/26/2016	6/15/2016	3,854.40
	TARGET CORP COM	2.40	5/16/2016	6/10/2016	4,944.80
	TRAVELERS COS INC	2.68	6/8/2016	6/30/2016	4,596.20
	VALERO ENERGY CORP COM	2.40	5/23/2016	6/21/2016	5,874.00
	VERIZON COMMUNICATIONS INC	2.26	4/6/2016	5/2/2016	4,243.15
	WELLS FARGO & CO	1.52	5/4/2016	6/1/2016	10,586.80
	WYNDHAM WORLDWIDE CORP	2.00	5/25/2016	6/10/2016	2,170.00
	Total				221,706.07
Expenses	LEIA MANAGEMENT FEE		5/12/2016	5/12/2016	-47,271.06
	Total				-47,271.06
	Net Income				174,435.01

Affinity Investment Advisors, LLC - Value Equity

Ohio Board Workers Compensation

Mar 31, 2016 to Jun 30, 2016

Realized Gain & Loss

Trade Date	Settlement Date	Quantity	Security Name	Symbol	Cost Basis(\$)	Proceeds (\$)	Commission (\$)	Total (\$)
5/20/2016	5/25/2016	11,470	ABBVIE INC	ABBV	636,438.53	687,328.20	114.70	50,889.67
5/20/2016	5/25/2016	6,030	BOSTON SCIENTIFIC CORP	BSX	112,831.55	134,624.65	60.30	21,793.10
5/20/2016	5/25/2016	21,640	MORGAN STANLEY	MS	731,079.27	577,567.66	216.40	-153,511.61
5/20/2016	5/25/2016	19,350	MICROSOFT CORP	MSFT	1,057,262.72	982,196.19	193.50	-75,066.53
5/20/2016	5/25/2016	64,650	BANK OF AMERICA CORP	BAC	1,030,546.86	935,128.92	646.50	-95,417.94
5/20/2016	5/25/2016	2,570	INTERCONTINENTAL EXCHANGE	ICE	642,836.27	676,684.50	25.70	33,848.23
Gains								106,531.00
Losses								-323,996.08
Realized Gains & Losses								-217,465.08